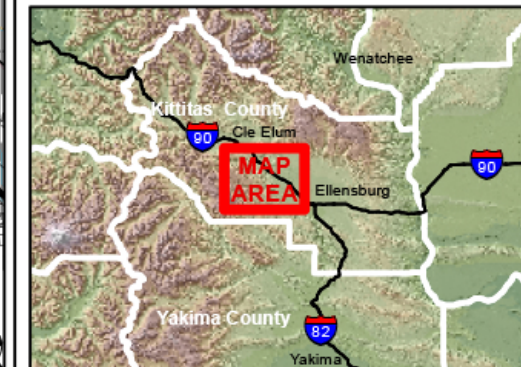
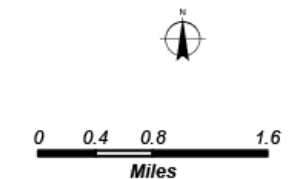


# LT Murray Cooperative Road Management Area

Roads open to public motor vehicle travel are posted with a round green reflector on white route markers as shown. All other roads are closed to all motor vehicles. Violators will be prosecuted. (WAC 232.12.18)

DISCLAIMER: The maps and map data are provided "as-is". Maps and data are created from multiple sources that may contain errors. TrailMeister cannot accept any responsibility for errors, omissions, or positional accuracy. Users of this map should be aware that potential hazards and obstructions may exist on the routes shown and that TrailMeister in no way warrants the safety or fitness of the suggested routes. The user of this map bears the full responsibility for his or her safety.

- Department of Natural Resources
- Department of Fish & Wildlife
- US Forest Service
- Private Land
- Green Dot Road
- Gate Location



This product is provided "AS IS" without warranty of any kind, either express or implied, including, but not limited to, the implied warranties of merchantability and fitness for a particular use. The Washington Department of Natural Resources will not be liable to the user of this product for any activity involving the product with respect to the following: (a) Lost profits, lost savings or any other consequential damages. (b) The fitness of the product for a particular purpose. (c) Use of the product or results obtained from the use of the product. -- June 2009.